





“Purgo focuses on Bone and Membrane only!”

Founded in 1999, Purgo Biologics strives to become one of the leading global companies in oral health care with its focus on safe biomaterials for soft tissue and bone regeneration.

Based on the specialized experiences accumulated by our outstanding research personnel, Purgo Research and Development Center based in Seoul is thriving to become the best in the world, specifically in the expertise of oral biomaterials for soft tissue and bone regeneration. All members in Research and Development Center are pursuing the optimized technical developments with various clinical studies, cooperative research with the governments, clinicians and educational institutions.

The solutions manufactured by Purgo are gaining fame throughout the world and Purgo’s solutions are widely accepted by global dentists from more than 30 countries.

Our production site is complying with the most international quality standards and regularly inspected by international agencies. Each production stage of our biologics solutions are controlled from the selection of the raw material to the final product.

We had a desire.

A desire to provide Valuable & Worthwhile products for our family. That's why we are here to let them smile shine and brightly again.

Purgo Biologics



THE Graft™

Natural bone substitute

Page 4 to 9

THE Graft Collagen

Bone substitute with collagen

Page 10 to 13

THE Cover™

Resorbable collagen membrane

Page 14 to 17

OpenTex®

Non-resorbable PTFE membrane

Page 18 to 21

OpenTex® -TR

PTFE Titanium reinforced membrane

Page 22 to 25

Biotex®

Suture for dental implant surgery

Page 26 to 29

Resorbable collagen membrane with high biocompatibility



THE Cover™

THE Cover™ is a resorbable collagen membrane consisting of porcine-originated Type I Collagen.

- ✓ THE Cover™ is a resorbable membrane originated from a pure Type I Collagen, and it's highly biocompatible and cell-friendly since chemical crosslinking agent was not used.
- ✓ There are two types of THE Cover™; THE Cover™ Flex offering easy handling experiences and THE Cover™ Stiff more favorable for space maintenance.



THE Cover™ Flex



THE Cover™ Stiff



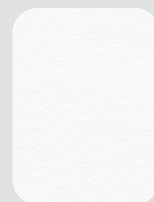
Benefits

- Easy-to-handle
- Hydrophilic
- Space maintenance
- Good flexibility and extension

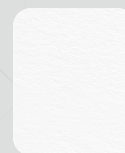
Specifications

THE Cover™

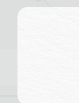
Description	Item NO.	Unit Size
THE Cover™ Flex	BP3-1520	15mm x 20mm
	BP3-2530	25mm x 30mm
	BP3-3040	30mm x 40mm
THE Cover™ Stiff	BP5-1520	15mm x 20mm
	BP5-2530	25mm x 30mm
	BP5-3040	30mm x 40mm



30 x 40 mm



25 x 30mm

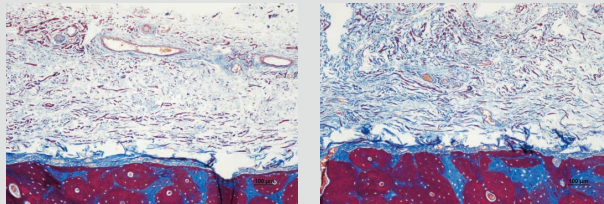


15 x 20mm

THE Cover™ Biocompatibility and Safety

THE Cover™ is a resorbable collagen membrane consisting of porcine originated Type I Collagen. It is safe and has high biocompatibility as manufactured by an inherent physical crosslinking method (Self-Assembly Technology) of Purgo without using any chemical crosslinking agents.

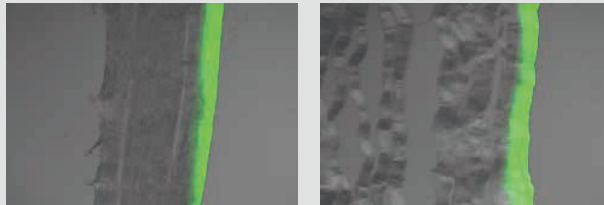
In-vivo beagle experiment (Masson Trichrome)* [11]



THE Cover™ (Flex)

THE Cover™ (Stiff)

Infiltration Test



THE Cover™ (Flex)

THE Cover™ (Stiff)

THE Cover™ Hydrophilicity and Morphology maintenance

THE Cover™ is hydrophilic and has excellent adhesion as it maintains its shape even after being left at room temperature for more than 30 minutes after hydration.

Dehydration Test (After 30min)

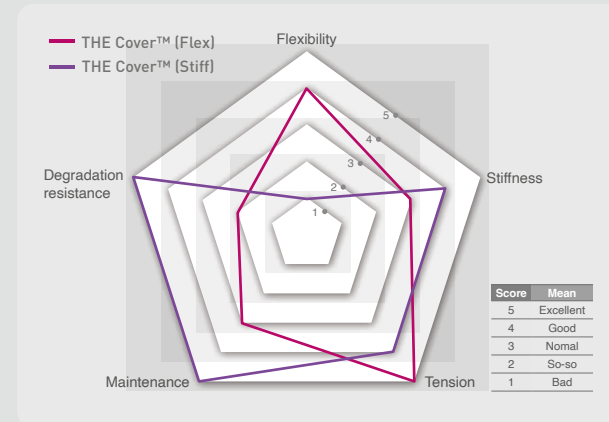


THE Cover™ (Flex)



THE Cover™ (Stiff)

Radial Graphs





THE Cover™ Flex or THE Cover™ Stiff

THE Cover™ Flex can cover an irregular surface with high flexibility.

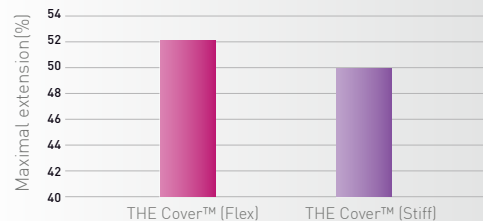
It has practically useful extension and offers convenient handling.

THE Cover™ Stiff is favorable for space maintenance with its high stiffness and ability to maintain space.

It is strongly resistant to biodegradation and suitable for indication that requires a longer time for bone maturation.



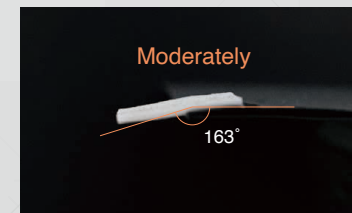
Extension



Flexibility

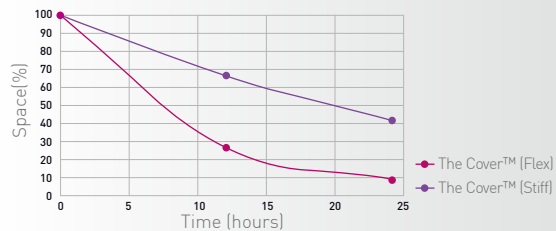


THE Cover™ (Flex)



THE Cover™ (Stiff)

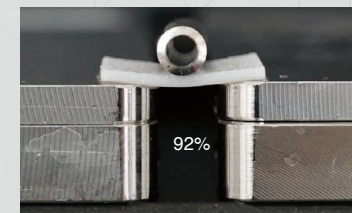
Collagenase degradation



Maintenance



THE Cover™ (Flex)



THE Cover™ (Stiff)

Indication Guide

Classification	BONE GRAFT		MEMBRANE				SUTURE
	Xenograft	Xenograft with collagen	Resorbable collagen membrane		Non-resorbable PTFE		PTFE Suture
	THE Graft	THE Graft Collagen	THE Cover Flex	THE Cover Stiff	OpenTex	OpenTex-TR	Biotex
Management of contained extraction socket	●	●	●				●
Management of non-contained extraction socket	●	●		●	●	●	●
Augmentation of minor bone defect	●	●	●				●
Augmentation of major bone defect	●			●	●	●	●
Sinus floor augmentation	●	●	●	●			●
Periodontal defects	●	●	●	●			●
Peri-implantitis	●	●	●	●			●
Immediate implant	●	●	●	●			●
Soft tissue volume	●	●	●	●			●

Scientifically supported and clinically-proven products



53+

Countries Approval



34+

Countries Sales



59+

Papers Published



30+

Papers SCI Journal



THE Graft™



THE Cover™

::OpenTex®

::OpenTex®-TR



812, 27, Dunchon-daero 457beon-gil,
Jungwon-gu, Seongnam-si,
Gyeonggi-do, 13219, Korea
Tel: +82 70 4827 5352
Made in Korea
www.purgobio.com

EU Importer

Purgo Biologics Europe

1 Square Felix Bloch,
Pôle Activ' Ocean,
85300 Challans, France
Tel: +33 (0)2 28 10 61 02
E-mail: europel@purgobiologics.com
www.purgo-europe.com

EU Authorized Representatives

OBELIS S.A

Bd. Général Wahis, 53
1030 Brussels, Belgium
Tel: +32 2 732 59 54
Fax: +32 2 732 60 03
E-mail: mail@obelis.net
www.obelis.net

THE Graft™, OpenTex®,
OpenTex® TR, Biotex®,
THE Graft™ Collagen,
THE Cover™.